

Landscaping and biodiversity enhancement

Glenhead Solar Farm has significant potential to enhance biodiversity, hosting a range of habitats including wildflower meadows, hedgerows and nectar-rich areas for pollinators. A typical solar farm uses around just 5% of the total site area with the rest of the land remaining undisturbed, creating significant opportunities to provide a range of ecological benefits.

At Glenhead Solar Farm, as with all RES developments, our goal is to deliver a biodiversity net gain as part of the development.

We aim to retain all existing hedgerow and woodland, where possible, and create new hedgerow and woodland to benefit a range of local species. New and infill native planting will provide visual screening from the solar farm as well as wildlife corridors and vital resources for mammals, birds and invertebrates.

Species-rich meadows and grasslands are among the most threatened habitats on the island of Ireland. Proposed species-

rich grassland planting can support healthy populations of insects, birds, bats, amphibians and many other animals. Grassland soils also provide useful ecosystem services by sequestering carbon and locking up harmful pollutants.

Wildflower meadows can provide habitat for pollinators such as butterflies, bees and hoverflies and reptile hibernaculum, hedgehog houses, bee banks, bird boxes and invertebrate hotels can further enhance the biodiversity of the site.

A Landscape Proposals Plan will form part of the planning application and will illustrate our immediate and long-term commitment to deliver landscape planting as well as the protection and enhancement of biodiversity around the site. The Landscape Proposals Plan will provide landscaping specifications for new vegetation in accordance with relevant standards, as well as information on the timings and aftercare regime for all planting. An illustrative Landscape Proposals Plan is shown below.

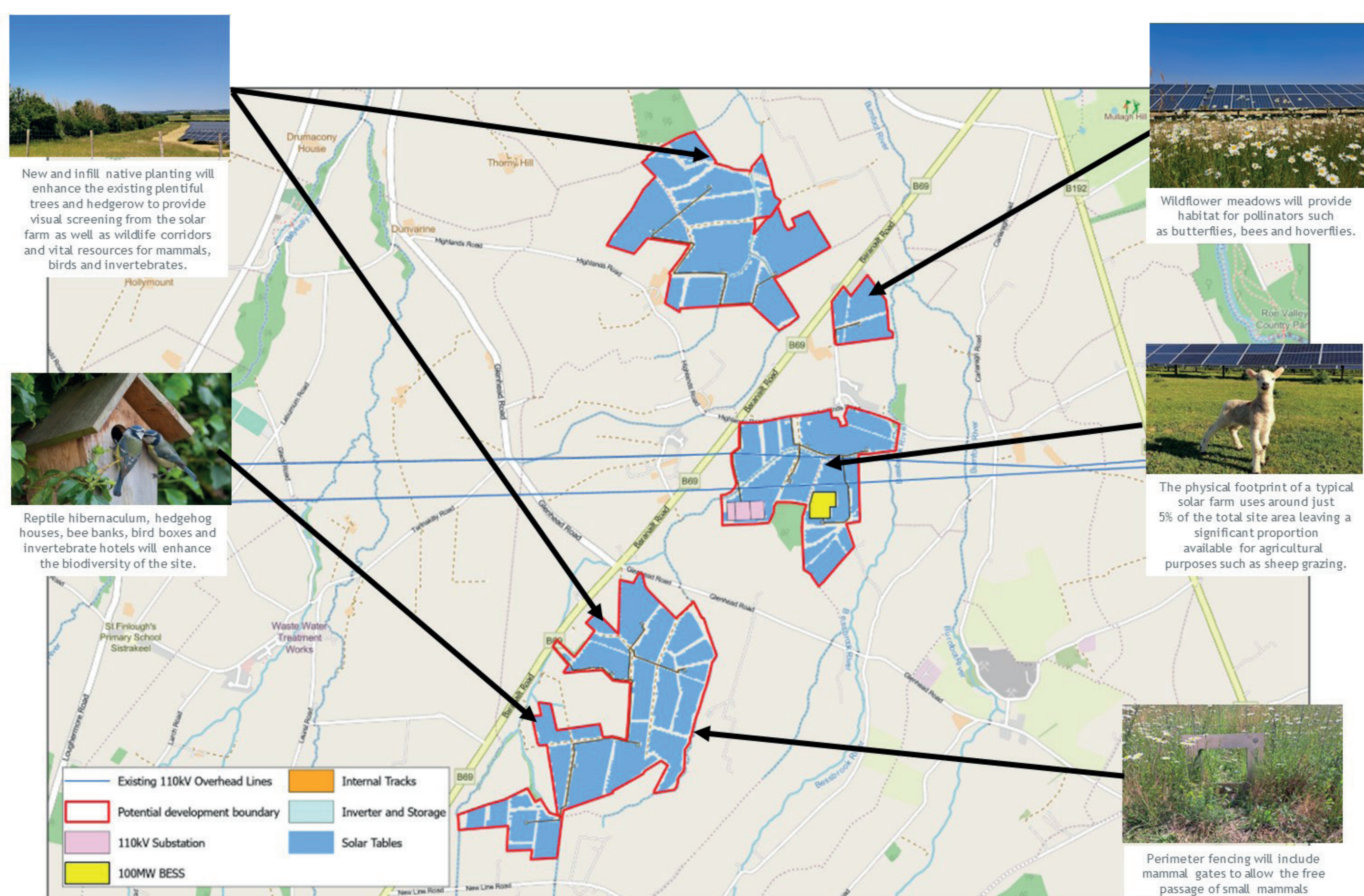


Image for illustrative purposes only

Glenhead Solar Farm Proposal

glenhead-solarfarm.co.uk

