

# Infrastructure and layout

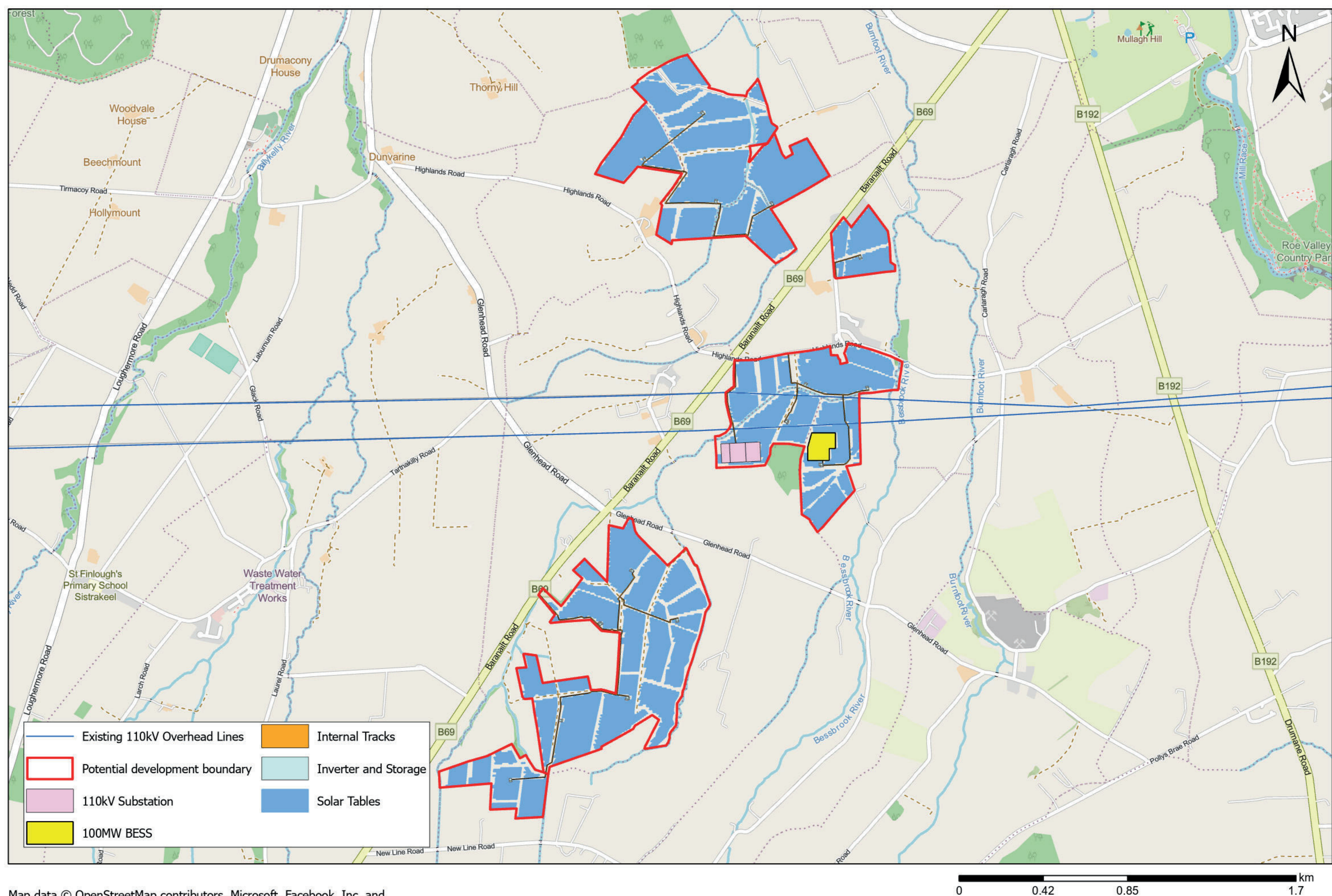
The plan below shows the preliminary layout for the Glenhead Solar Farm.

The project would be capable of producing up to 80MW of clean, renewable electricity and include an energy storage system of up to 100MW. The preliminary layout is based on initial findings from environmental and technical surveys which are ongoing. We are currently consulting on this layout and as such, it is subject to change.

In addition to the solar panels, the site infrastructure is expected to include:

- **A network of on-site access tracks**
- **110kV substation**
- **Inverters/storage on hardstandings**
- **Energy storage facility**
- **Temporary construction compound(s)**
- **Deer fencing around the perimeter of the solar farm**

## PRELIMINARY INFRASTRUCTURE LAYOUT



We are still consulting on the layout and as such, it is subject to change.

**Glenhead Solar Farm Proposal**  
[glenhead-solarfarm.co.uk](http://glenhead-solarfarm.co.uk)

**RES**  
power for good