

Traffic and access

Component and material deliveries are a key phase in the construction of any energy storage project.

Our preferred route for delivery of materials and access for construction and maintenance is via the A2 Ballykelly Road and B69 Baranailt Road.

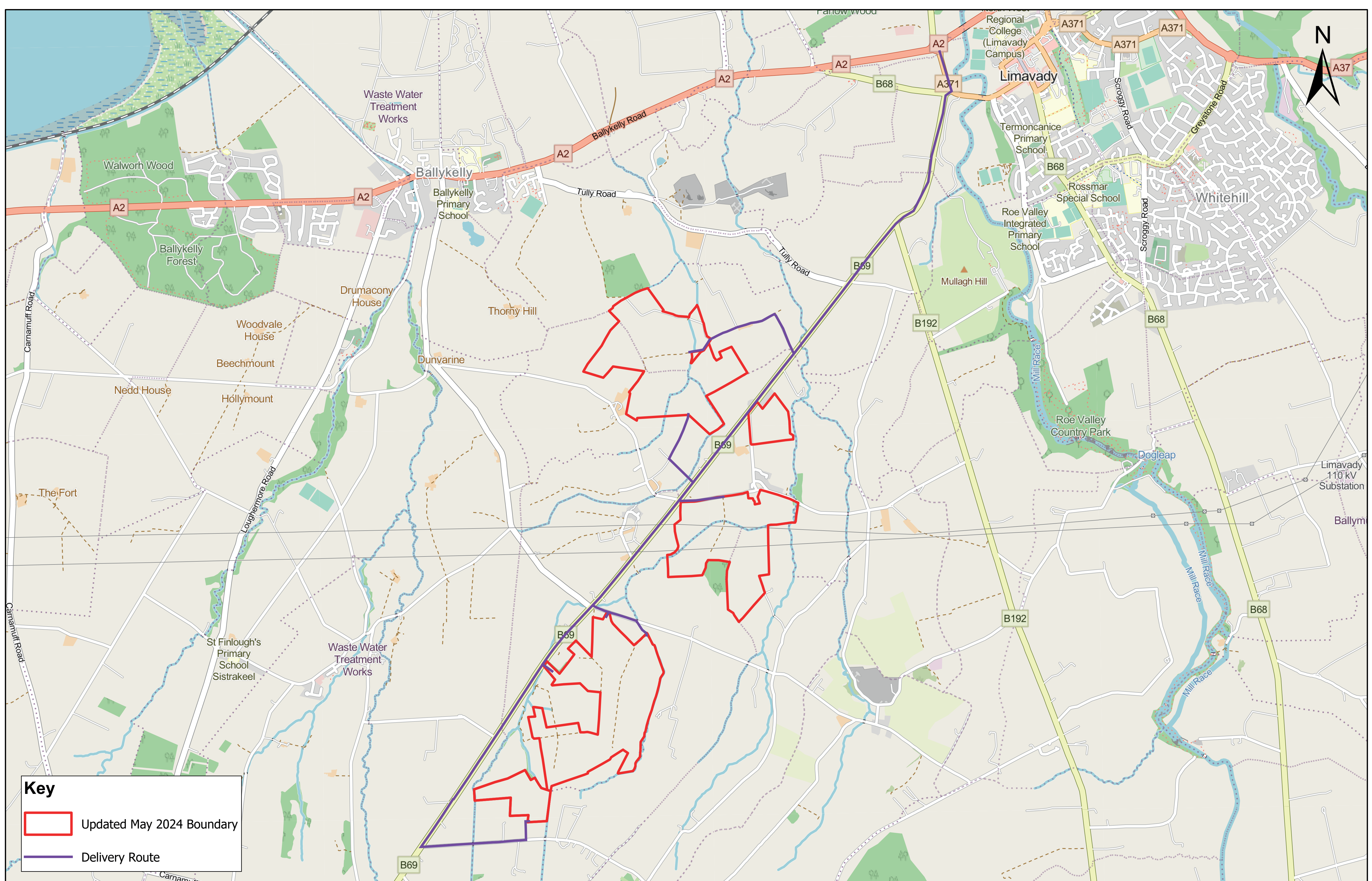
A transport survey is ongoing and we will consult with the Department for Infrastructure (DfI) Roads, the emergency services, the local community and other relevant bodies to produce a Construction Traffic Management Plan (CTMP) to support any future planning application.

The CTMP outlines the overall framework for managing the safe movement of construction

and delivery traffic as well as itemising the expected number of traffic movements and timing restrictions.

The traffic movements will be limited to avoid morning and evening peak times, where possible. There will also be a dedicated Community Liaison Officer to engage with local residents throughout the construction and operational phases, if the solar farm is consented.

Delivery Route



Map data © OpenStreetMap contributors, Microsoft, Facebook, Inc. and its affiliates, Esri Community Maps contributors, Map layer by Esri

0 0.5 1 2 km

Glenhead Solar Farm Proposal

glenhead-solarfarm.co.uk

RES
power for good