

What's changed?

In September 2023, RES presented preliminary plans for the proposed Glenhead Solar Farm. Our original plans were for a 29.9MW solar farm with energy storage, which was expected to connect to the Limavady substation approximately 9km from the site via the local highway. Feedback from the community in 2023 included concerns about traffic disruption during the construction phase of the project.

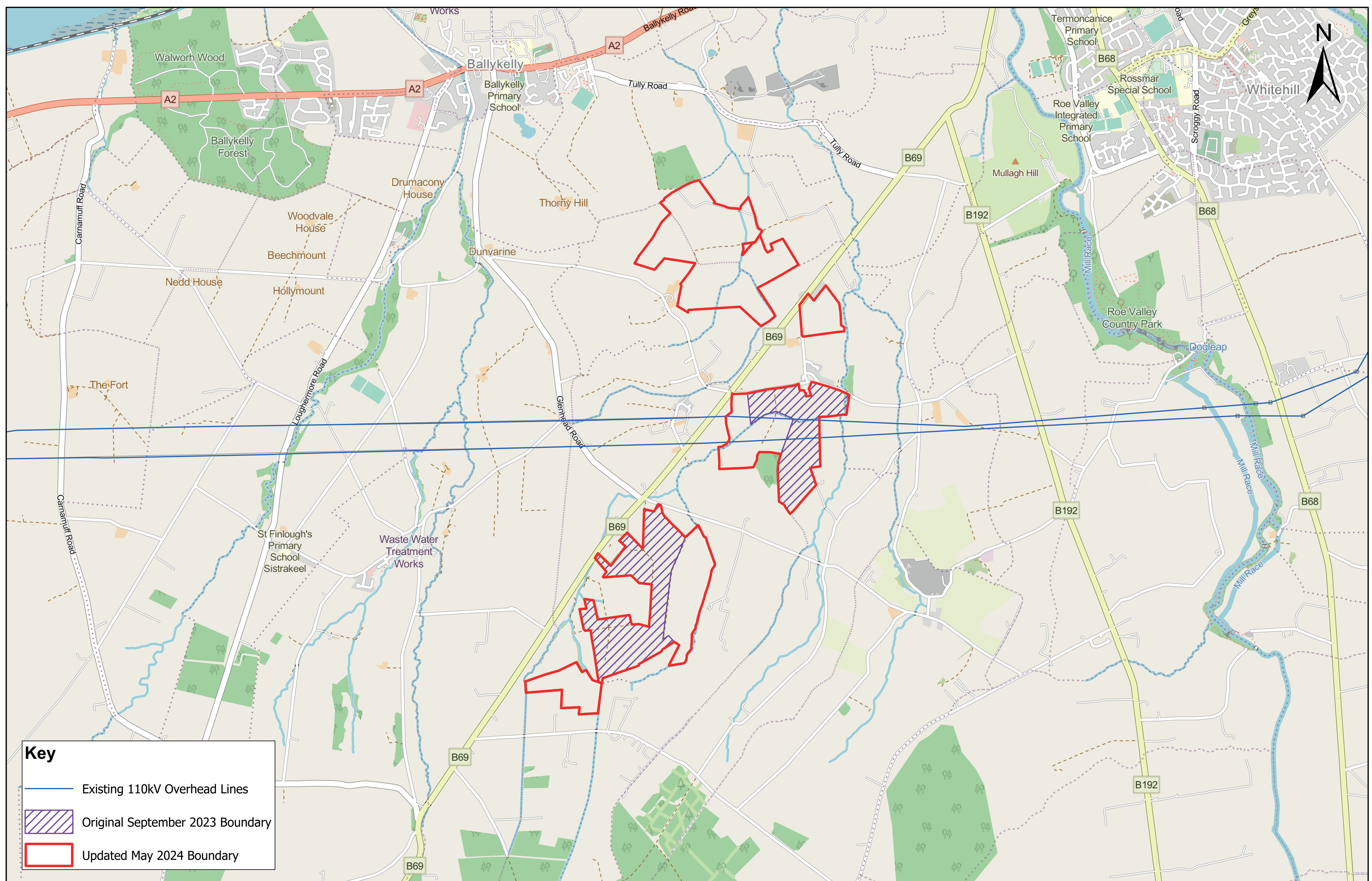
Since then, we have been refining and improving the preliminary design for the Glenhead Solar Farm, which would continue to sit sensitively within the existing landscape whilst maximising its generating capacity to meet the challenges of increased grid costs and

enable clean, renewable electricity to still be delivered at the lowest cost to the consumer.

The updated preliminary design maximises the existing on site grid infrastructure and via a new 110kV substation, we can achieve an on-site grid connection which will significantly reduce the disruption on the local highway network.

The plan below shows the original development boundary from September 2023 in comparison to the development boundary for the updated design we are presenting here today, and includes the location of the existing grid infrastructure which we propose to connect into.

Site Location Plan



Map data © OpenStreetMap contributors, Microsoft, Facebook, Inc. and its affiliates, Esri Community Maps contributors, Map layer by Esri